

# Global Living Wage Series

## China

### Urban Zhengzhou

August 2019 Update

Monthly Living Wage

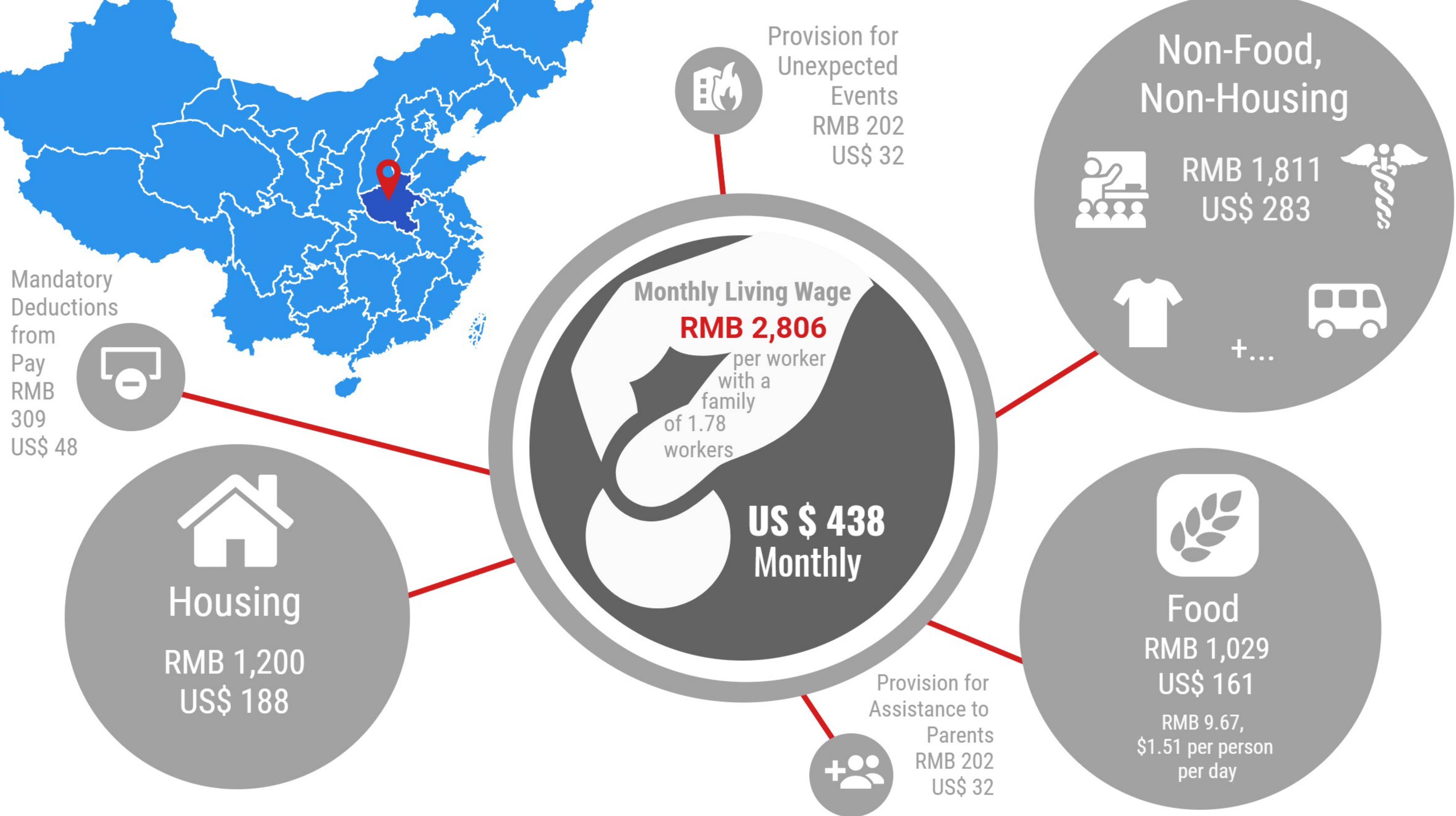
¥3,036

All data in this infographic are from 2015, see Update Report for most recent data: <https://www.globallivingwage.org/living-wage-benchmarks/living-wage-for-zhengzhou-china/>

Photo Courtesy of Robert Scoble, CC-BY-NC-2.0

Zhengzhou, China

Synopsis of Living Wage Study Conducted By: Hui Xu, Shi Li, Liang Xiong, and Peng Zhan  
Living Wage Estimated using the Anker Methodology, August 2015

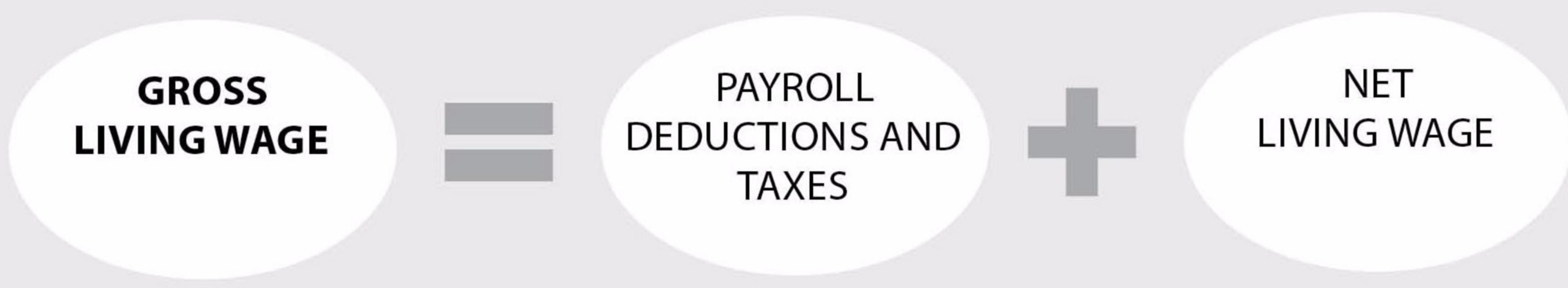


#### Local Housing Standard for Family

- Floor area of 60 square meters of covered space (equivalent to around 48 square meters of living space)
- 1 living room, 1 bedroom, 1 kitchen and 1 bathroom/toilet
- Durable roof that does not leak
- Durable walls such as brick or cement
- Safe water in the house
- Flush toilet in the house
- Kitchen area equipped with basic kitchen facility
- Electricity
- Sufficient windows
- Located at a reasonable distance from workplace

#### Model Diet

- edible grams per person per day
- 378g cereal (120g rice, 58g bread, 200g noodles)
  - 81g potato
  - 50g tofu (firm)
  - 100g milk (1 cup for children)
  - 50g eggs (1 egg)
  - 80g pork (one portion)
  - 19g grass carp (whole fish, two meals per week)
  - 242g vegetables (81g bok choy, 78g tomato, 83g Chinese cabbage)
  - 98g fruit (57g apple, 41g banana)
  - 35g cooking oil (soybean as least expensive oil)
  - 10g sugar
  - 2g tea (packaged green tea)



#### Context Provided for High Tech Industry

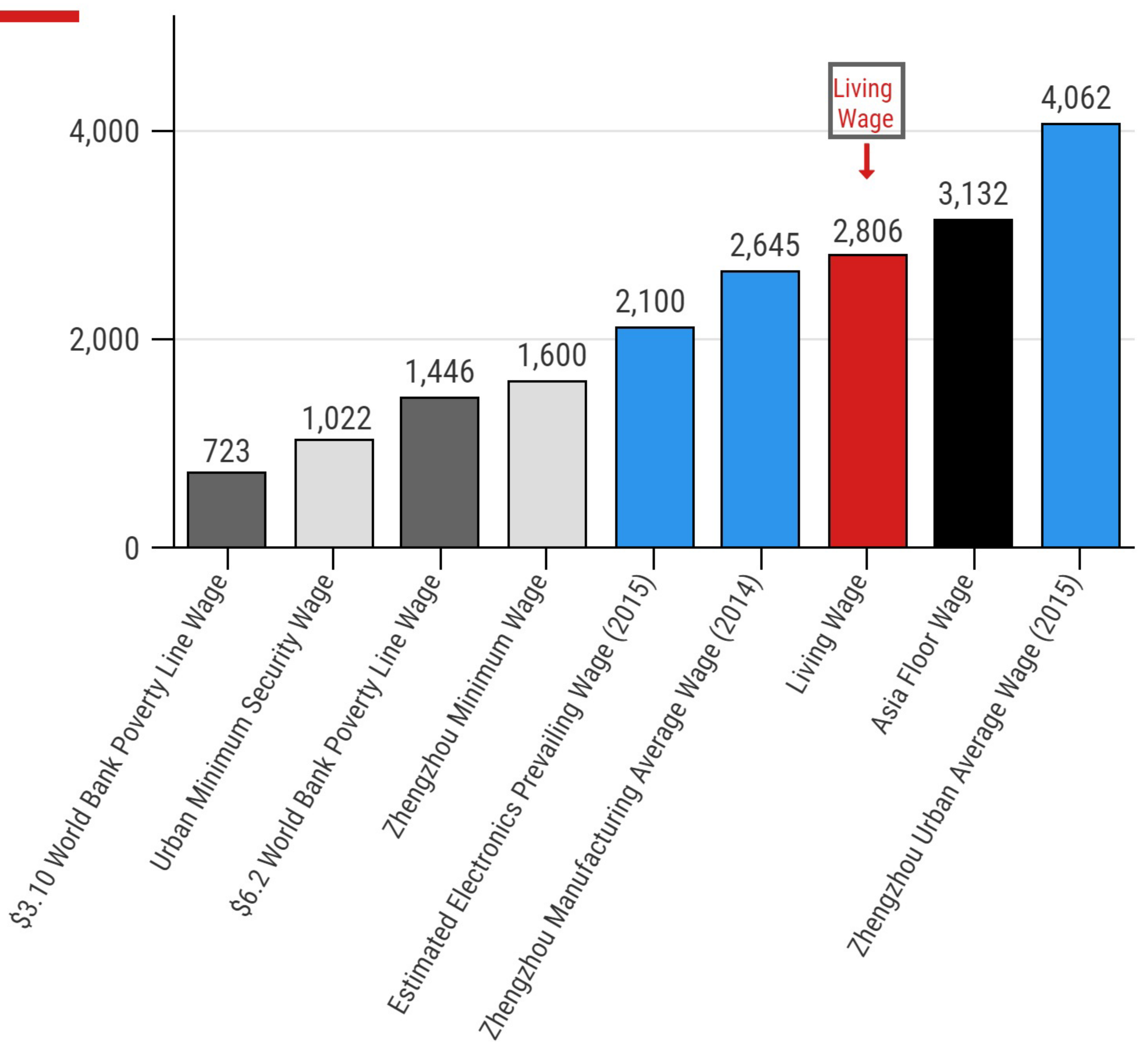
#### Monthly Living Wage for Urban Zhengzhou, China

#### Key Values and Assumptions

- 40 Hour Work Week
- Exchange Rate Used US \$1 = RMB Yuan 6.4
- Family Size 3.5  
2 Adults, 1.5 Children  
1.78 Workers Per Family

Total Monthly Living Wage = ((Food + Housing + Non-Food, Non-Housing + Provision for Unexpected Events) ÷ Number of Workers in a Family) + Mandatory Deductions from Pay

Register for Regular Benchmarks Updates from the GLWC at <http://eepurl.com/b6Jlyf>



Legend: ● Poverty Line Wages ● Minimum Wages 2015 ● Prevailing Wages ● Living Wage ● Asia Floor Wage 2013

**GLOBAL LIVING WAGE COALITION**

Global Living Wage Coalition Members: Fairtrade International, Forest Stewardship Council, GoodWeave International, Rainforest Alliance, Social Accountability International, Sustainable Agriculture Network, and UTZ. In Partnership with the ISEAL Alliance and Richard Anker and Martha Anker

Made Possible by the Generous Support of:



Ministry of Foreign Affairs of the Netherlands